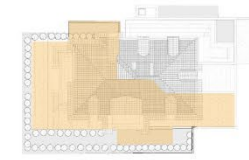


PLANTAS | PLANTS



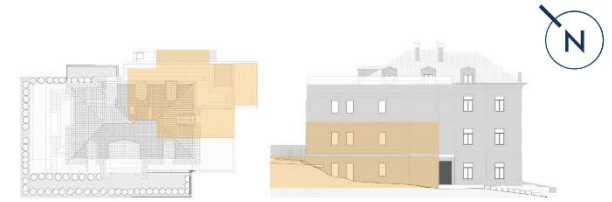
- 01 Piscina interior com hidromassagem / Interior pool with dyfromassage
- 02 Sauna / Sauna
- 03 Banho turco / Turkish bath
- 04 Ginásio / Gym
- 05 Instalação Sanitária / Sanitary Instation
- 06 Sala de massagens / Massage room
- 07 Arrumos / Storage room [5 m2/sqm - 7,80 m2/sqm]
- 08 Garagem / Parking lot
- 09 Jardim exterior / Exterior Garden
- 10 Administração / Administration
- 11 Piscina / Pool

PLANO PRINCIPAL - PISO 0 / MASTER PLAN - FLOOR 0



- 01 Sala / Living room [37,84 m²/sqm]
- 02 Haal / Hall [8,90 m²/sqm]
- 03 Cozinha / Kitchen [9,22 m²/sqm]
- 04 Master Suite / Master Suite [17,52 m²/sqm]
- 05 I.S. Master Suite / Master Suite Bathroom [4,47 m²/sqm]
- 06 Suite / Suite [16,86 m²/sqm]
- 07 I.S. Suite / Suite Bathroom [5,51 m²/sqm]
- 08 Suite / Suite [18,58 m²/sqm]
- 09 I.S. Suite / Suite Bathroom [4,61 m²/sqm]
- 10 I.S. Social / Social Bathroom [2,71 m²/sqm]
- 11 Lavandaria / Laundry
- 12 Terraço / Terrace [26,62 m²/sqm]
- 13 Terraço / Terrace [93,61 m²/sqm]
- 14 Jardim / Garden [43,92 m²/sqm]
- 15 Jardim / Garden [17,35 m²/sqm]

APARTAMENTO A - T3 - PISO 0 / 3 BEDROOM - APARTMENT A - FLOOR 0 [356,35 m²/sqm]

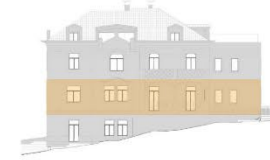


- 01 Sala / Living room [41,77 m²/sqm]
- 02 Hall / Hall [7,48 m²/sqm]
- 03 I.S. Social / Social Bathroom [2,41 m²/sqm]
- 04 Cozinha e Lavandaria / Kitchen and Laundry [14,32 m²/sqm]
- 05 Terraço / Terrace [21,65 m²/sqm]
- 06 Terraço / Terrace [21,90 m²/sqm]
- 07 Jardim / Garden [14,77 m²/sqm]

APARTAMENTO B DUPLEX - T3 - PISO 0 / 3 BEDROOM - APARTMENT DUPLEX B - FLOOR 0 [227,61 m²/sqm]

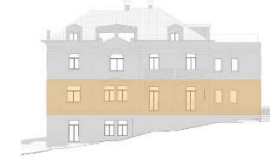


- 07 Hall / Hall [5,01 m2/sqm]
- 08 Suite / Suite [14,49 m2/sqm]
- 09 I.S. Suite / Suite Bathroom [5,53 m2/sqm]
- 10 Suite / Suite [14,01 m2/sqm]
- 11 I.S. Suite / Suite Bathroom [4,09 m2/sqm]
- 12 Suite / Suite [14,10 m2/sqm]
- 13 I.S. Suite / Suite Bathroom [3,46 m2/sqm]



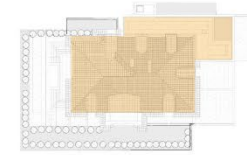
- 01 Sala / Living room [39,04 m²/sqm]
- 02 Haal / Hall [10,61 m²/sqm]
- 03 Cozinha / Kitchen [9,36 m²/sqm]
- 04 Lavandaria / Laundry [2,47 m²/sqm]
- 05 I.S. Social / Social Bathroom [4,14 m²/sqm]
- 06 Master Suite / Master Suite [20,91 m²/sqm]
- 07 I.S. Master Suite / Master Suite Bathroom [3,85 m²/sqm]
- 08 Suite / Suite [11,45 m²/sqm]
- 09 I.S. Suite / Suite Bathroom [3,79 m²/sqm]
- 10 Suite / Suite [18,93 m²/sqm]
- 11 I.S. Suite / Suite Bathroom [3,84 m²/sqm]
- 12 Terraço / Terrace [13,47 m²/sqm]

APARTAMENTO C - T3 - PISO 1 / 3 BEDROOM - APARTMENT C - FLOOR 1 [183,82 m²/sqm]



- 01 Sala / Living room [39,04 m²/sqm]
- 02 Haal / Hall [10,44 m²/sqm]
- 03 Cozinha / Kitchen [9,36 m²/sqm]
- 04 Lavandaria / Laundry [2,47 m²/sqm]
- 05 I.S. Social / Social Bathroom [3,97 m²/sqm]
- 06 Master Suite / Master Suite [20,74 m²/sqm]
- 07 I.S. Master Suite / Master Suite Bathroom [3,87 m²/sqm]
- 08 Suite / Suite [11,44 m²/sqm]
- 09 I.S. Suite / Suite Bathroom [3,81 m²/sqm]
- 10 Suite / Suite [18,24 m²/sqm]
- 11 I.S. Suite / Suite Bathroom [4,11 m²/sqm]
- 12 Terraço / Terrace [12,67 m²/sqm]

APARTAMENTO D - T3 - PISO 2 / 3 BEDROOM - APARTMENT D - FLOOR 2 [184,08 m²/sqm]



- 02 Haal / Hall [9,02 m²/sqm]
- 06 Suite / Suite [13,65 m²/sqm]
- 07 I.S. Suite / Suite Bathroom [5,85 m²/sqm]
- 08 Suite / Suite [13,31 m²/sqm]
- 09 I.S. Suite / Suite Bathroom [5,22 m²/sqm]
- 10 Suite / Suite [10,89 m²/sqm]
- 11 I.S. Suite / Suite Bathroom [4,23 m²/sqm]

PENTHOUSE DUPLEX - T4 - APARTAMENTO E - PISO 3 / 4 BEDROOM - PENTHOUSE DUPLEX - APARTMENT E - FLOOR 3 [262,47 m²/sqm]



- 01 Sala / Living room [44,88 m²/sqm]
- 03 Cozinha / Kitchen [11,71 m²/sqm]
- 04 Master Suite / Master Suite [16,89 m²/sqm]
- 05 I.S. Master Suite / Master Suite Bathroom [8,69 m²/sqm]
- 12 I.S. Social / Social Bathroom [3,84 m²/sqm]
- 13 Lavandaria / Laundry [4,01 m²/sqm]
- 14 Terraço / Terrace [48,60 m²/sqm]
- 15 Piscina / Pool [8,31 m²/sqm]
- 16 Varanda / Suite Bathroom [5,51 m²/sqm]
- 17 Arrumos / Storage room

PENTHOUSE DUPLEX - T4 APARTAMENTO E - PISO 3 / 4 BEDROOM - PENTHOUSE DUPLEX - APARTMENT E - FLOOR 3 [262,47 m²/sqm]

